



# MONTHLY MEMBERSHIP PROGRESS REPORT

District 29 C

Results as of: 4/30/2016

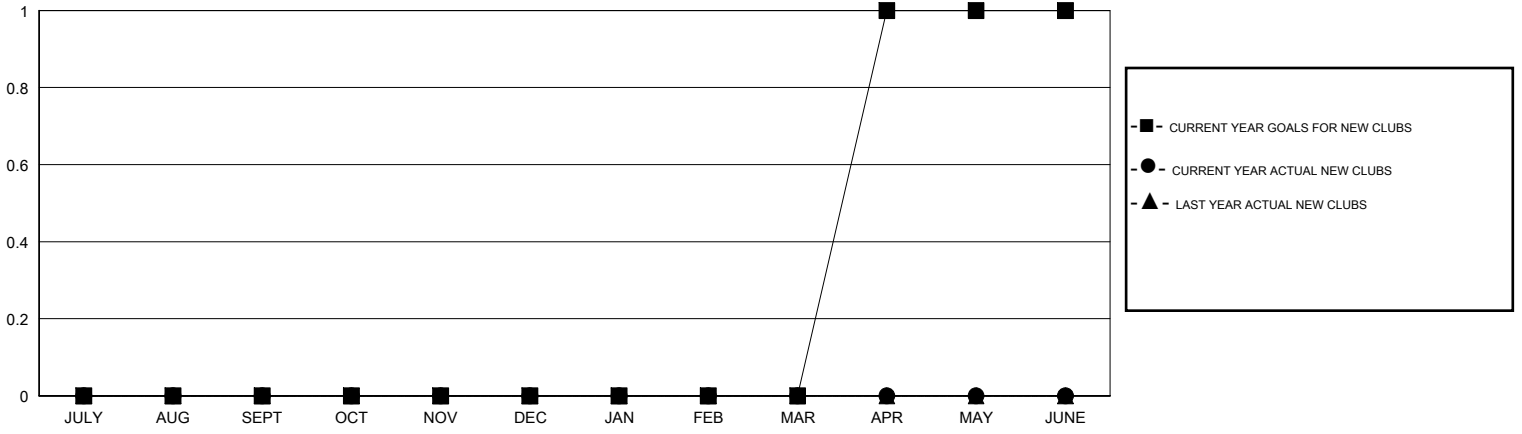
GMT: OPEN

LOCATION WEST VIRGINIA

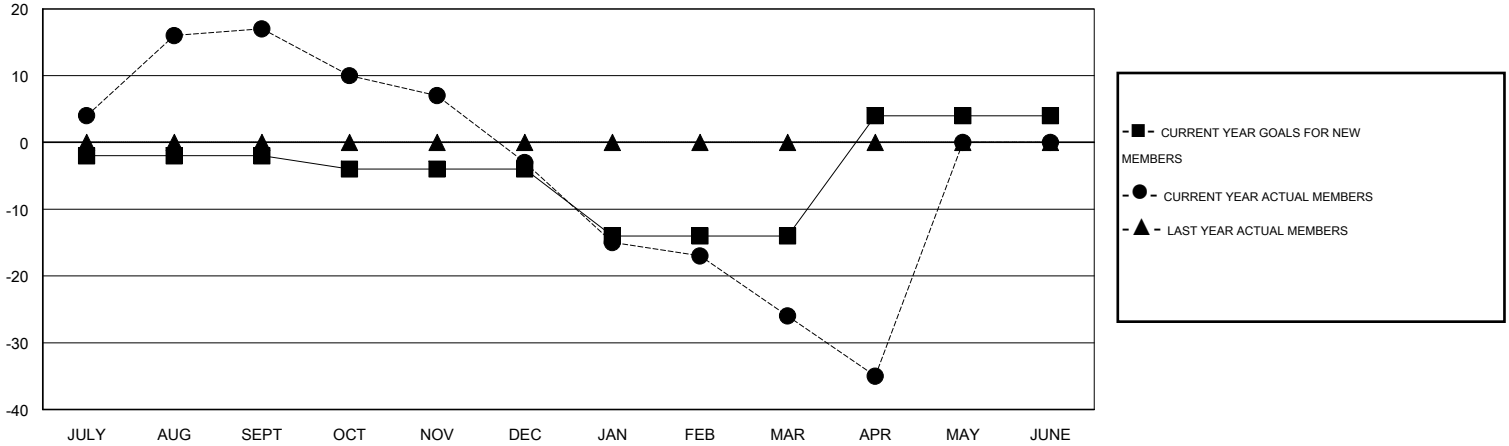
GMT CA 1

Clubs					Members				
RESULTS FOR 2015-2016					RESULTS FOR 2015-2016				
QUARTER	NEW CLUB GOAL	NEW CLUBS	DROPPED CLUBS	NET GAIN/LOSS	QUARTER	NEW MEMBER GOAL	CHARTER AND NEW MEMBERS ADDED	DROPPED MEMBERS	NET GAIN/LOSS
JULY/AUG/SEPT	0	0	1	-1	JULY/AUG/SEPT	-2	27	10	17
OCT/NOV/DEC	0	0	0	0	OCT/NOV/DEC	-2	19	39	-20
JAN/FEB/MAR	0	0	0	0	JAN/FEB/MAR	-10	13	36	-23
APR/MAY/JUNE	1	0	1	-1	APR/MAY/JUNE	18	10	19	-9

GOALS AND ACTUAL NEW CLUBS CUMULATIVE



GOALS AND ACTUAL MEMBERS CUMULATIVE



DROPPED CLUBS: 2	29 CLUBS OF 63 ADDED 1 OR MORE NEW MEMBERS	<u>GENDER DISTRIBUTION</u>	
		MALE	906 (69.43%)
<u>DROPPED MEMBERS</u>	<a href="#">CLICK HERE FOR HEALTH ASSESSMENT DATA</a>	FEMALE	399 (30.57%)
DECEASED		24	FAMILY UNIT MEMBERS
CLUB CANCELLED	8	HEAD OF HOUSEHOLD	162
OTHER	72	NON-HEAD OF HOUSEHOLD	168
<b>TOTAL</b>	<b>104</b>		